

TECHNICAL DATA SHEET

Tocobest™ D-α-Tocopherol Powder 350IU

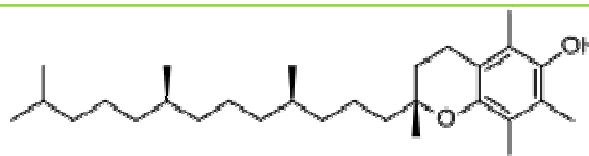
Chemical Properties

CAS No.: 59-02-9

EINECS No.: 200-412-2

Chemical Formula: C₂₉H₅₀O₂

Molecular Weight: 430.71



Description

D-alpha-tocopherol, the most active form of VE, is originated from soybean oil. It is insoluble in water, but soluble in ethanol, gasoline, ethyl and vegetable oil, heat-stable (almost no decomposition if heated to 200°C), nearly odorless. It darkens slowly in air and on exposure to light.

Solubility

It is insoluble in water, but soluble in ethanol, gasoline, ethyl and vegetable oil.

Specification

Appearance	Tan, white granular powder
Acidity Value	Max 2mgKOH/g
D-alpha-Tocopherol	Min 23.5~33.6%
Bulk density	0.37~0.55g/ml
Heavy Metals	Max 10ppm
Arsenic	Max 4ppm
Total Plate Count	Max 3000cfu/g
Yeasts&Molds	Max 300cfu/g
<i>E.coli</i>	Negative
<i>Salmonella</i>	Negative

Ingredients

NLT 23.5% D-alpha-tocopherol, with other carriers

Labeling

In the United States and the European Union: Tocobest™ Vitamin E Powder
D-alpha-Tocopherol 350IU

Applications

The properties of VE like Antioxidant activity, Bio-membrane stabilizing activity, promotion of blood circulation, maintaining hormone balance and Anti-thrombosis activity give the main functions of VE. D-alpha-tocopherol products are used for fortification of margarine, oil, fat, nutrition products and infant food, or in supplements and as an antioxidant in oil and fat, also used in cosmetic products.



Safety

This product is safe for the intended use. Avoid ingestion, inhalation of dust or direct contact by applying suitable protective measures and personal hygiene. See Material Safety Data Sheet for full safety information.

Handling recommendations

Keep container in a cool, well-ventilated area. Keep away from heat. Keep away from sources of ignition. Empty containers pose a fire risk, evaporate the residue under a fume hood. Ground all equipment containing material. Do not ingest. Do not breathe gas/fumes/vapor/spray. If ingested, seek medical advice immediately and show the container or the label. Keep away from incompatibles such as oxidizing agents.

Packaging, Storage & Shelf Life

Package	20kg/steel drum, 50kg/steel drum or 190kg/steel drum.
Storage	It should be keep container tightly closed and away from strong light.
Shelf Life	The product may be stored for 24 months from the date of manufacture in the unopened original container and at room temperature.