

TECHNICAL DATA SHEET

Tocobest™ Mixed Tocopherols Oil

50% m

Chemical Properties

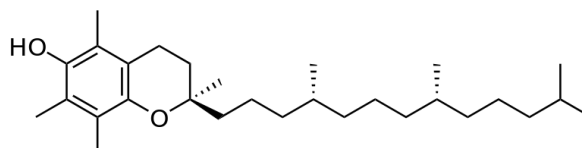
D-alpha-tocopherol

CAS No.: 59-02-9

EINECS No.: 200-412-2

Chemical Formula: $C_{29}H_{50}O_2$

Molecular Weight: 430.71



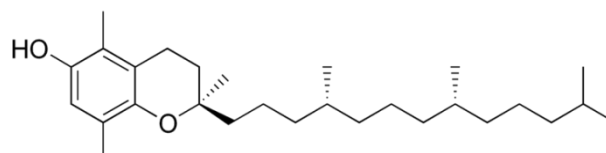
D-beta-tocopherol

CAS number: 16698-35-4

EINECS No.: 16698-35-4

Chemical Formula: $C_{28}H_{48}O_2$

Molecular Weight: 416.68



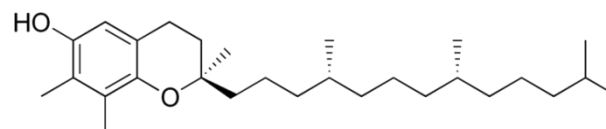
D-gamma-tocopherol

CAS number: 54-28-4

EINECS No.: 200-201-5

Chemical Formula: $C_{28}H_{48}O_2$

Molecular Weight: 416.68



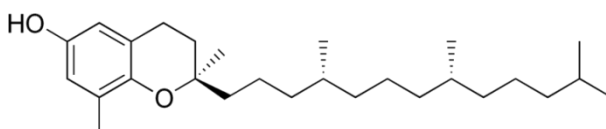
D-delta-tocopherol

CAS number: 119-13-1

EINECS No.: 204-299-0

Chemical Formula: $C_{27}H_{46}O_2$

Molecular Weight: 402.64



Description

Mixed Tocopherols Oil 50% contains natural mixed tocopherols which are obtained from soy oil by suitable physical means. Tocobest™ Mixed Tocopherols Oil 50% is intended for use as an antioxidant in the dietary supplement, food and cosmetic industry.

Solubility

It is insoluble in water, and soluble in ethanol, gasoline, ethyl and vegetable oil.

Specification

Item	Specification	Test Method
Appearance	A light yellow to brownish red viscous oil	Visual
Taste	Vegetable oil taste	Organic
Specific rotation	Min +20°	GB19191
Acidity	Max 1ml	USP
Total tocopherols	Min 50%	HPLC
d-(β+γ+δ)-tocopherols in total tocopherols	Min 80%	HPLC
Heavy metals (As Pb)	Max 10 ppm	GB/T 5009.74
Total plate count	Max 1000 CFU/g	USP<61>
Total yeast & mold	Max 100 CFU/g	USP<61>
<i>E. Coli</i>	Negative	USP<61>
<i>Salmonella</i>	Negative	USP<61>

Ingredients

50% Mixed tocopherols(D-alpha-, beta-, gamma- & delta-), 50% refined soy oil.(m is short for soy oil)

Labeling

In the United States and the European Union: Tocobest™ Vitamin E Oil
Mixed Tocopherols Oil 50%

Applications

It is used as a nutrient in edible oil, dairy products, flesh products, nutritional and pharmaceutical preparations such as soft-shell capsule, and also used widely in cosmetics.

Safety

This product is safe for the intended use. Avoid ingestion, inhalation of dust or direct contact by applying suitable protective measures and personal hygiene. See Material Safety Data Sheet for full safety information.

Handling recommendations

Wash thoroughly after handling. Remove contaminated clothing and wash before reuse. Use with adequate ventilation. Minimize dust generation and accumulation. Avoid contact with eyes, skin, and clothing. Keep container tightly closed. Avoid ingestion and inhalation.

Packaging, Storage & Shelf Life

Package	20kg/drum, 50kg/drum, or 190kg/drum; or according to customers' requirements.
Storage	Store in cool and dry place. It should be protected from heat, light, oxygen and moisture. Keep the container tightly closed. Once opened, use out quickly.
Shelf Life	24 months if sealed and stored properly.