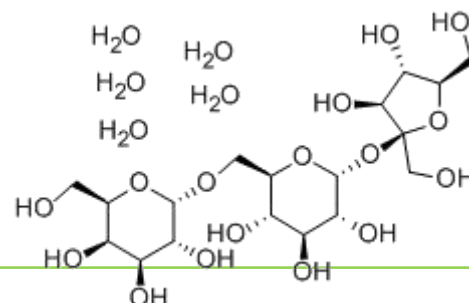


SPECIFICATION SHEET

Oatcan™ D(+)-Raffinose pentahydrate

Plant source: Beet
Synonym: RAFFINOSE, 5-HYDRATE; RAFFINOSE PENTAHYDRATE;
CAS NO.: 17629-30-0
Molecular Formula: C₁₈H₄₂O₂₁
Molecular Weight: 594.51



GENERAL CHARACTERISTICS

RAFFINOSE is a soluble sugar derived from the Beet. It is a natural sugar comprised of five water that are linked together RAFFINOSE.

Description	
Appearance	White crystalline powder
Odor	Odorless

ANALYTICAL CHARACTERISTICS

RAFFINOSE	99.42%
Weight Reduction by Dring	14.55%
Ash	Max 0.04%
Ph	6.7
Generic E. Coli	Complies
Pb Contained	Max 0.1 µg/g
As ₂ O ₃ Contained	Max 0.1 µg/g

MICROBIAL CHARACTERISTICS

Bacteria	20 cfu/g
mold	40cfu/g
yeast	40cfu/g



Staphylococcus aureus *Negative/g*
Salmonella *Negative/g*

FUNCTIONS

- 1.Raffinose is the proliferation of Bifidobacterium factor.*
- 2.Raffinose is the protection of intestinal health.*
- 3.Raffinose play a role in the prevention and treatment of liver disorders.*
- 4.Raffinose Keep skin delicate, smooth, elastic, youth.*

PACKING&SHELF LIFE

Package 25kg/drum, pack in paper-drums and two plastic-bags inside.
Storage In cool & dry place. Keep away from strong light and heat.
Shelf life 2 years if sealed and stored properly.